



CS – 4001PM Capacity Test System

During load tests of batteries, such as capacity tests, cell/block voltage values may change rapidly. This is the case for example at the start (voltage sag) and at the end of a discharge.

CS-4001PM is a multi-channel test system, which can be connected to each cell/block. Furthermore it is possible to measure the battery's total voltage and the load current. The complete measuring points are automatically recorded within a couple of seconds. Capacity and load tests become more accurate, efficient and safer as when using manual systems. Especially the safety of the test personal becomes an issue during discharge tests. The use of **CS-4001PM** enables the test personal to keep a sufficient safety distance to the battery while testing. Most of the mechanical contacts like relays have been replaced with semiconductor switches.

User Interface

The CS-4001PM is operated with an integrated USB-interface. An auxiliary serial interface is also established (for electronic load control, etc.).

Technical Data

No. of Measuring Inputs

CS – 4001PM/127	
Cell/Block-voltage	127
Total voltage	2
Current	2
Temperature	2

DC Measuring Ranges

Input	Range
Cell/Block voltage	15V
Maximum differential connector voltage for C1-C8	250V / connector (600V in total)
Total voltage input	600V
Current (via Shunt)	100mV/1V

Resolution/Accuracy

Range DC	Resolution	Accuracy
15V	1,00 mV	±0,05% ±2 Digits
600V	100 mV	±0,10% ±2 Digits
100mV	0,01 mV	±0,10% ±2 Digits
1000mV	0,10 mV	±0,10% ±2 Digits

Other

Power supply	115-230V, 50-60Hz, ±10%
Operating temperature	+10°C – +35°C +50°F - +95°F
Storage temperature	+5°C – +50°C +41°F - +122°F

Application environment: The instrument is intended to be used in industrial environment

Warranty: 1 year

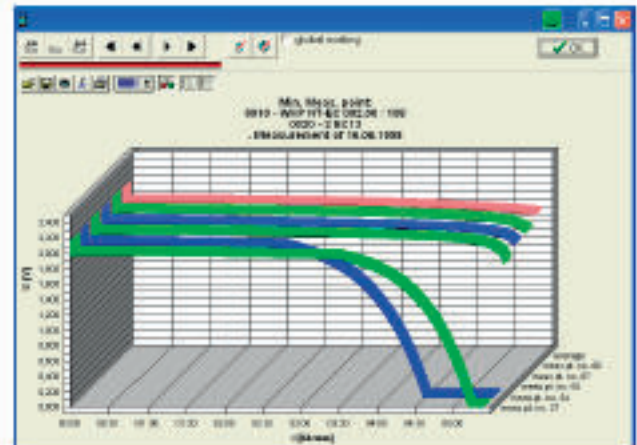
The above specifications are valid at nominal input voltage and an ambient temperature of +25°C (+77°F).

Specifications are subject to change without notice.

Scope of Delivery

- Instrument
CS-4001/127PM
- Data cable (USB)
- CS4001-LIGHT Software (download)
- TMC-MANAGER Software (download)
- Download instructions

Example: Graphical Analysis



Optional Accessories



- Multi cable MKB-16/250 with 16 measuring points, max. 250V
- Electronic probe for spec. Gravity



The CS-4001PM is integrated in a robust transportation box.